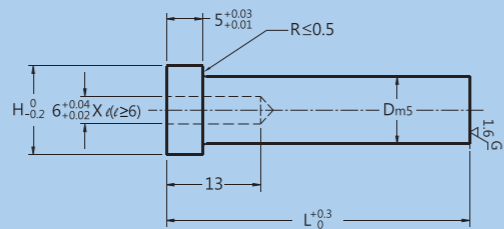
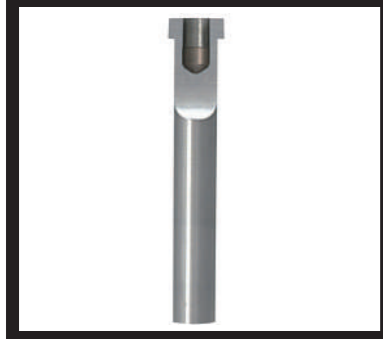


HTP059



※ Including Dowel Pin 附定位銷

Type 品名	Material 材質	Hardness 硬度	Delivery 交貨日
HTP059	Equivalent to SKD11 SKD11同級	60~63HRC	8 Working Days 8 個工作日

Type 品名	D	L (u:10mm)	H
HTP059	10	40~150	13
	13	40~150	16
	16	40~150	19
	20	40~150	23
	25	40~150	28
	32	40~150	35
	38	40~150	41
45	40~150	48	

Order Ex. 訂購範例

HTP059-10-L



外徑
長度

Alterations 追加加工名稱	Description 加工說明	Order Ex. 訂購範例
LC 	Length change 長度尺寸變更 HTP059 → 30 ≤ LC < L *0.1mm increments 指定單位0.1mm (If combined with LKC · LKZ, 0.01mm increments can be selected.) (與LKC · LKZ併用時 · 可指定至0.01mm單位)	HTP059-10-50-LC
LKC LKZ 	Full length tolerance change 變更全長公差 LKC → L $\begin{matrix} +0.3 \\ 0 \end{matrix}$ → $\begin{matrix} +0.05 \\ 0 \end{matrix}$ LKZ → L $\begin{matrix} +0.3 \\ 0 \end{matrix}$ → $\begin{matrix} +0.01 \\ 0 \end{matrix}$ *Cannot be used for D > 25, or for L (LC) < 16 不適用於 D > 25 · L (LC) < 16	HTP059-10-50-LKC
KC 	Addition of single key flat to head 頭緣部止迴1面加工	HTP059-10-50-KC
WKC 	Addition of double key flats in parallel 頭緣平行加工(2面)	HTP059-10-50-WKC
HC 	Head diameter change 變更頭緣直徑 D ≤ HC < H 0.1 mm increments 指定單位0.1mm	HTP059-10-50-HC
TC 	2 ≤ TC < T 0.1 mm increments 指定單位0.1mm (If combined with TKC · TKM, 0.01mm increments can be selected. 與TKC · TKM併用時可指定至0.01mm單位) * Full length L is shortened by (T - TC) . If combined with LC, full length is equal to LC. 全長L會減少(T-TC) · 與LC併用時 · 全長與LC相同	HTP059-10-50-TC
TKC TKM 	Head thickness tolerance change 變更頭緣厚度公差 TKC → T $\begin{matrix} +0.3 \\ 0 \end{matrix}$ → $\begin{matrix} +0.02 \\ 0 \end{matrix}$ TKM → T $\begin{matrix} +0.3 \\ 0 \end{matrix}$ → $\begin{matrix} 0 \\ -0.02 \end{matrix}$	HTP059-10-50-TKC